

Gmm

**ThermoPro
TP60S LCD Digital Hygrometer
Indoor / Outdoor
Temperature and Humidity Monitor
(60m / 200ft Range)**



THERMOPROTP60S

Description:

The ThermoPro TP60S, indoor outdoor temperature and humidity monitor gauge is equipped with professional grade sensors, making it the best choice to get accurate measurements, be it in your home or remotely where the sensors sit. Keep your home safe and comfortable by using the TP60S as it allows for you to ensure proper room temperature and humidity control.

Features:

- Bold, easy to read LCD screen displays current indoor and outdoor temperature and humidity percentages.
- Features temperature and humidity percentages with trend indicator arrows allowing you to react in advance!
- Temperature and humidity monitor stands upright for tabletop use or is wall-mountable. Remote sensor is also wall-mountable.
- Includes all-time / 24 hours high and low records for temperature and humidity.
- You can simply reset the temperature and humidity with the press of a button.

Wirelessly Track Multiple Locations

Temperature and humidity gauge displays readings from up to 3 outdoor remote sensors that can as far as 200ft/60m away from the base station. With the long range, feel free to position your sensors anywhere that best suits your needs. (Additional sensors are available for purchase)

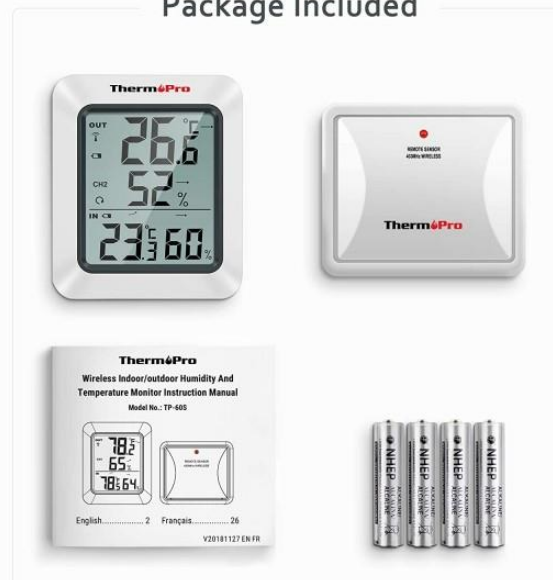
Quick Response and Accuracy Measurements

Monitor the current indoor humidity & temperature with accuracy to within $\pm 1^{\circ}\text{C}$ and $\pm 2\sim 3\%\text{RH}$ combined with a lightning quick response time, which takes measurements every 30 seconds to provide you the most up to date and accurate readings available.

Multiple Placement Options

Indoor hygrometer features built-in tabletop stand and wall-mount to allow you to place your indoor thermometer wherever is most convenient for you and your home.

Package Included



Specifications:

- 433 MHz transmission frequency
- Transmission Range: Up to 200 ft. (range maybe shorter based on interference present)
- Temperature Range: $-20^{\circ}\text{C}\sim 70^{\circ}\text{C}$ ($-4^{\circ}\text{F}\sim 158^{\circ}\text{F}$)
 - Indoor: $-20^{\circ}\text{C}\sim 70^{\circ}\text{C}$ ($-4^{\circ}\text{F}\sim 158^{\circ}\text{F}$)
 - Outdoor: $-20^{\circ}\text{C}\sim 70^{\circ}\text{C}$ (-4°F to 158°F)
- Humidity range: 10%~99%RH
- Resolution:
 - Temperature: 0.1°C (0.1°F)
 - Humidity: 1%RH
- Accuracy:
 - Temperature: $\pm 1.1^{\circ}\text{C}$ (2.0°F)
 - Humidity: $\pm 2\%$ from 30%RH to 80%RH; $\pm 3\%$ below 30%RH and above 80%RH
- Refresh rate: 10 seconds
- Operation temperature: $+10\sim 60^{\circ}\text{C}$
- Storage condition: $-20^{\circ}\text{C}\sim 60^{\circ}\text{C}$, 20~80%RH
- Base station (Receiver):
 - Power supply: 1.5V (AAA size) X 2
 - Dimension: 79 x 66 x 23.5mm
 - Weight: approx. 82g (included batteries)
- Remote sensor (Transmitter):
 - Power supply: 1.5V (AAA size) X 2
 - Dimension: 61 x 71 x 23.5mm
 - Weight: approx. 73g (included batteries)

Package includes:

- 1 x base station unit (Receiver)
- 1 x remote sensor (Transmitter)
- 4 x AAA battery
- 1 x User Manual

Wireless Indoor Outdoor Thermometer Temperature and Humidity Gauge Features:

1. The bold, easy to read LCD screen displays the current indoor / outdoor temperature and humidity percentages.
2. Temperature and humidity percentage trend indicator arrows and daily high, low information.
3. Display has a built-in tabletop stand and wall mount.
4. Includes all-time / 24 hours high and low records for temperature and humidity.
5. Reset the stored temperature and humidity

NOTE – Synchronize Remote Sensors

- Position the remote sensor near the base station
- Install batteries into transmitter and receiver
- The RF signal icon (located on the upper left of the base station display) will flash
- Wait for a moment or press TX button in the outdoor transmitter
- The remote sensor temperature/humidity will appear
- Each time the batteries (either base station or remote sensor) are replaced or base station/remote sensor lost connection, make sure to follow the synchronization process to pair and re-connect the base station and remote sensor

Compact Size





 **Temperature Display**  **Humidity Display**  **°C/°F Unit Selector**  **Tend Indicator**  **Low Battery**

Indoor receiver Outdoor transmitter



The indoor receiver displays: OUT T 26.6°C, CH1 50%, IN CH 23.5°C, 53%.

2 Placement Options

Satisfy All Your Needs

 **Wall-Mounted Hole**



 **Table Stand**



Support up to 3 Remote Sensors

(Range up to 60 Meters)

1 2 3



CH1 CH2 CH3



The receiver displays: OUT T 27.3°C, CH1 48%, IN CH 24.5°C, 65%.

Wide Using Occassions

Office Wine cellar Warehouse Greenhouse



Baby room Bedroom



The receiver displays: OUT T 25.6°C, CH1 52%, IN CH 22.9°C, 50%.

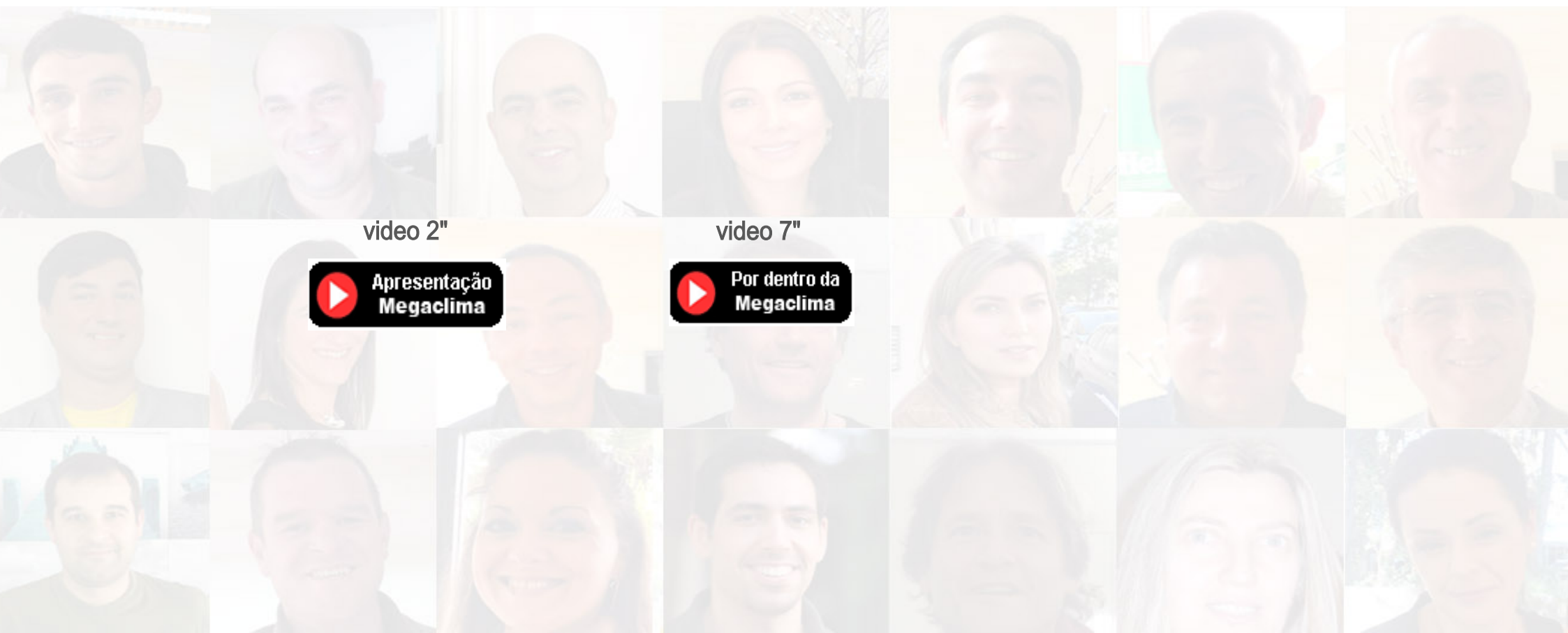


Serviços Centrais
Rua Francisco Ribeirinho, 28
Centro Empresarial da Abrunheira – Escritório 11
Abrunheira 2710-736 Tel:219253 300
Sintra www.megaclima.pt geral@megaclima.pt

Delegação de Lisboa Tel: 219 151 792
lisboa@megaclima.pt

Delegação de Queluz Tel: 21 925 00 28
queluz@megaclima.pt

30 Anos na climatização e tratamento de ar



video 2"



video 7"

