

A FEW PRACTICAL BENEFITS:

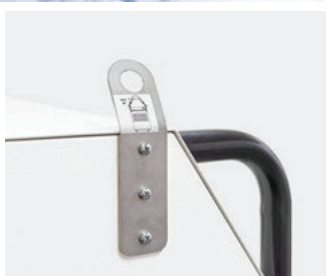
Room temperatures can be cooled down to 10 °C*

Extremely robust construction, designed for use under the most diverse of conditions

Start-up with hardly any installation work – ready for use in a matter of minutes

Immediate effect: high temperatures and humidity values are reduced significantly

** depending on the operating conditions*



Can also be supplied with crane lugs

For maximum mobility the models PT 6500 S and PT 15000 S are optionally also available with crane lugs attached to both sides.

PortaTemp – air conditioning systems for professional mobile applications

Possible use:

- Trade fairs and exhibitions
- Laboratories
- Offices and shops
- Marquees
- Temporary shelter
- Storage and production facilities
- Measuring and control centres
- Cooling at peak times



Design, functionality and performance characteristics of the PortaTemp cooling units are consistently geared to the use in frequently changing surroundings under the rough conditions in trade and industry and enable a quick and easy start-up at almost every operating site.

- Robust construction, specifically designed for the high mobility and quality requirements in the everyday rental business
- Slim – fits through every door and into every elevator
- Ready for operation in a matter of minutes, owing to the 230 V technology also in all non-industrial fields
- All operating elements are easily accessible
- Owing to the high cooling capacity and air flow rate even large rooms can quickly be cooled down to 10 °C
- Gas-controlled defrost unit for uninterrupted cooling operation
- Adjustable air flow direction thanks to flow controller at the air outlet
- Installation advantage: All split units come with a refrigerant-free connection line to the heat exchanger



PT 6500 S control panel



The ideal air conditioner for every demand

Our PortaTemp devices are available in 2 different versions: water-cooled (W) and air-cooled (A).

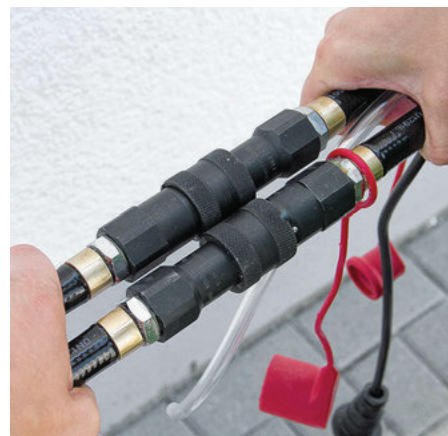
Trotec's PT 6500 S and PT 15000 S with their distinctive industrial design are water-cooled air conditioning units with a refrigerant-free connection line to the external heat exchanger PT S. Two integrated bar handles protect the front panel from impact damages while simultaneously allowing easier transportation.

Unique in the world: The robust split air conditioner PT 6500 AHX is designed for use under the most extreme climate conditions from -26 °C to +60 °C and manages a reliable permanent cooling of room air to +10 °C in every operating environment.

PT 4500 A and PT 4500 W are structurally identical on the outside (1), the W-model however comes equipped with a separate cooling circuit with external heat exchanger PortaTemp W (2), whereas the warm air of the air-cooled PT 4500 A is discharged to the outside through two air hoses to be connected at the rear (3).



Connecting as quick as lightning thanks to water cooling circuit with quick release fastener



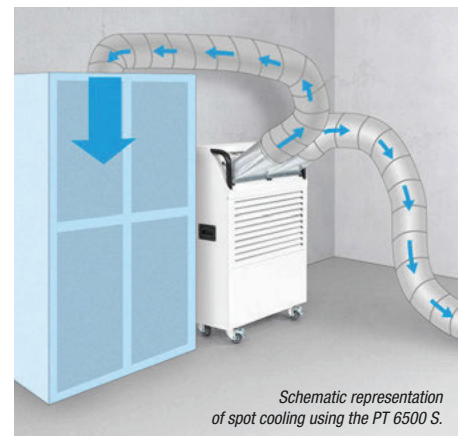
Installing connecting lines flexibly, quickly and easily – this feature of the water-cooled PortaTemp air conditioning systems makes for an unbeatable practical advantage:

The water-cooled models come with two separate cooling circuits. The refrigerant circuit of the basic device is hermetically sealed. By contrast, another circuit is installed between cooling unit and external heat exchanger for cooling the condenser as well as for heat removal using a connection set. In this additional circuit only water with a low glycol concentration circulates as cooling medium, thus ruling out a loss of refrigerant when connecting or disconnecting the devices.

For a quick installation of the water and power lines between air conditioner and heat exchanger the connection sets of the PortaTemp-W air conditioning systems come equipped with high-class quick-lock couplings. As a result, even longer connections over a distance of up to 40 metres can be realized without difficulty in a quick, clean and easy manner.

Especially in office, server or production rooms, control centres or studios, where there is hardly ever any room to accommodate such heat dissipation measures, this unique connection facility is invaluable.

Spot cooling option



Especially advantageous for the cooling application in sensitive areas – such as CNC controls or laboratories – is the spot cooling option of the PortaTemp air conditioning systems (except PT 6500 AHX).

With the spot cooling exhaust distributor, that is available as accessory, the cool air can be led precisely via hoses to the target areas to be cooled.



PlanoPT for time-saving connection feedthroughs underneath doors

A FEW PRACTICAL BENEFITS:

Professional quality
"made in Germany" –
originally produced by Trotec

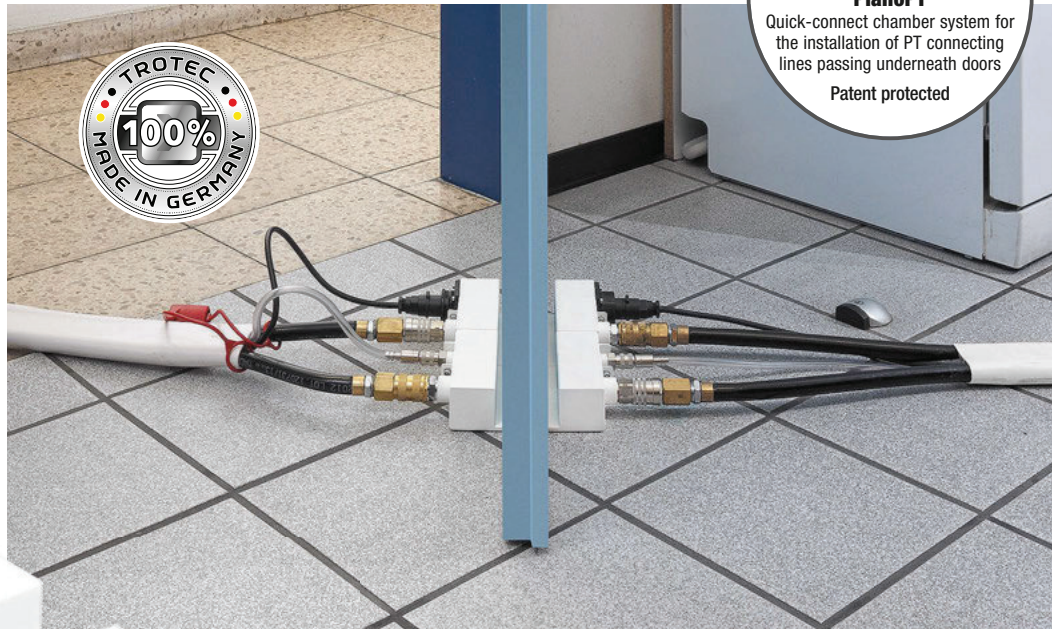
Ultra-compact design with the centre
section being no higher than 5 mm
to permit flexible connections passing
underneath doors

Completely ready-to-connect for a
quick installation of PT connection
lines

With the passage underneath,
the doors can remain closed

Robust, flow-optimized construction

Watertight multi-chamber system



One of a kind – Trotec exclusive:
PlanoPT
Quick-connect chamber system for
the installation of PT connecting
lines passing underneath doors
Patent protected



When using PT air conditioners the installation of the connection sets leading to the external heat exchanger can prove to be a difficult task depending on the site of use, e.g. in case of high walls or missing intermediate ceilings – as in halls.

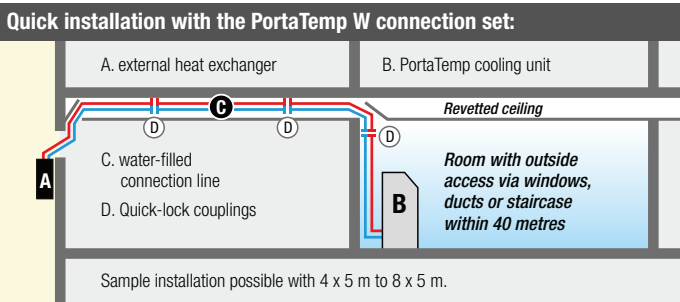
The PlanoPT connection feedthrough underneath doors constitutes an ideal and time-saving solution for such situations.

The PlanoPT, exclusively available at Trotec, comes with all the connections required for a quick installation of the connection set. Quick-lock couplings and plugs for the power line as well as condensation hose connections are provided on both sides for all water-cooled PT models.

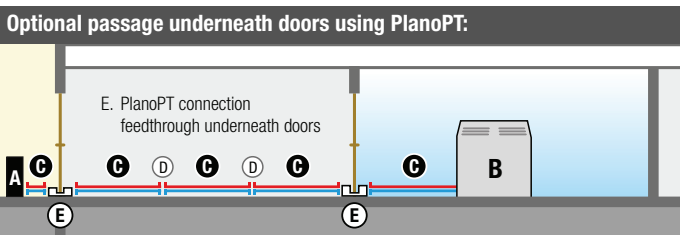
The flow design of the watertight multi-chamber system has been optimized specifically for the flow rates of PT air conditioners and – despite the centre section's height of only 5 millimetres – it guarantees a smooth and uninterrupted pass-through without counter-pressure.

Owing to its particularly flat centre section the PlanoPT can be installed under virtually any common type of internal or external door. The PlanoPT does not affect the closing characteristics. Consequently, external doors of functional rooms, for instance, can remain closed and locked.

PlanoPT
Feed-through for PT
connection sets underneath doors
Article number 1.210.000.101



With the PortaTemp-W models it is possible to install the external heat exchanger up to 40 m away from the cooled room by using connection kits. The hoses are simply led through ceilings, walls or along the floor.



With the PlanoPT connection feedthrough, which is available as accessory, connection sets can be installed and connected underneath doors.





Technical data	PortaTemp 4500 A	PortaTemp 4500 W	PT 6500 S	PT 15000 S	PortaTemp 6500 AHX	
Article number	1.210.001.010	1.210.001.012	1.210.001.070	1.210.001.075	1.210.001.050	
Cooling capacity at 25 °C [kW / Btu]	4.0 / 13.700	4.5 / 15.400	6.6 / 22.500	15 / 51.000	6.5 / 22.200	
Max. cooling capacity [kW/Btu]	4.0 / 13.700	5.5 / 18.800	7.1 / 24.226	15 / 51.000	8.2 / 28.000	
Cooling medium	Air	Water	Water	Water	Water	
Attainable room temperature (min.) ¹ [°C]	+10	+10	+10	+10	+10	
Surrounding conditions [°C]	+0 to +35	+0 to +35	+7 to +35	+7 to +35	-26 to +60	
Air flow rate [m³/h]	Stage 1	320	535	1,150	2,000	650
	Stage 2	800	750	1,400	2,400	1,400
	Stage 3	–	–	1,500	2,600	–
Input voltage [V/Hz]	230 / 50	230 / 50	230 / 50	400 / 50	230 / 50	
Fuse [A]	16	16	16	32	25	
Power input ² / max. [kW]	1.75 / 2.1	1.86 / 2.8	2.65 / 2.99	5.7 / 6	3.6 / not specified	
Operating hours counter	–	–	■	–	–	
Dual counter for operating hours and energy consumption (MID compliant *)	–	–	□	■	–	
Cooling agent**	Type	R-407C	R-407C	R-410A	R-410A	R-134a
	Amount [g]	950	900	900	1,450	1,250
GWP factor**	1,774	1,774	2,088	2,088	1,430	
CO ₂ equivalent** [t]	1.69	1.60	1.88	3.03	1.79	
Condensate discharge	Water tank/exhaust air	Automatic	Automatic	Automatic	Automatic	
Heat dissipation [mm]	ø 2 x 125	–	–	–	–	
Temperature control	Thermostat	Thermostat	Thermostat	Thermostat	Thermostat	
Sound level ³ (stage 1 / 2 / 3) [dB(A)]	59 / 61 / –	59 / 61 / –	47 / 52 / 59	51 / 56 / 65	52 / 58 / –	
Length [mm]	458	330	360	414	388	
Width [mm]	695	695	815	1.740	850	
Height [mm]	954	954	1,020	1,462	1,271	
Weight ⁴ [kg]	108	108	88	205	127	
External heat exchanger	–	PortaTemp W	PT S	PT S	PortaTemp AHX	
Article number	–	1.210.000.110	1.210.000.111	2 x 1.210.000.112	1.210.000.120	
Power input [kW]	–	0.076	0.14	0.2	0.3	
Sound level ³ (stage 1 / 2) [dB(A)]	–	– / 62	– / 62	– / 65	48 / 68	
L x W x H [mm]	–	280 x 560 x 520	320 x 650 x 460	370 x 700 x 560	571 x 740 x 520	
Weight [kg]	–	20	16.5	18	49	
Connection kits	–	PortaTemp W	PT S	PT S	PortaTemp AHX	
Article number	–	1.210.000.130	1.210.000.133	2 x 1.210.000.133	1.210.000.121	
Line length [m]	–	5	10	10	5	
Attainable total length of connected sets [m]	–	max. 30 - 40 ¹	max. 30 ¹	max. 30 ¹	max. 30 - 40 ¹	
Available accessories (detailed description on the right)						
Spot cooling attachment	1.210.000.140		1.210.000.151	1.210.000.153	–	
Crane lugs ⁵	–	–	1.210.000.105	1.210.000.105	–	
Air transport hose	6.100.001.155	6.100.001.155	6.100.001.200	6.100.001.205	–	
PlanoPT	–	1.210.000.101	1.210.000.101	1.210.000.101	1.210.000.101	
PlanoPT Adapt	–	1.210.000.102	not mandatory	not mandatory	–	

Available accessories

Spotcooling attachment for hose-guided cooling

For PortaTemp 4500 A / 4500 W, cooling air outlet ø 2 x 150 mm, Art. no. 1.210.000.140



For PT 6500 S, cooling air outlet ø 2 x 200 mm, Art. no. 1.210.000.151



For PT 15000 S, cooling air outlet ø 2 x 300 mm, Art. no. 1.210.000.153



Crane lugs⁵

For PT 6500 S and PT 15000 S, Art. no. 1.210.000.105



Air transport hose Tronect SP-T

Length 7,6 m, for spot cooling.



For PortaTemp 4500 A / 4500 W, ø 155 mm, Art.-Nr. 6.100.001.155

For PT 6500 S, ø 203 mm, Art. no. 6.100.001.200

For PT 15000 S, ø 305 mm, Art. no. 6.100.001.205

PlanoPT Adapt

Adapter cable for the application of the PlanoPT with PortaTemp 4500 W, Art. no. 1.210.000.102



■ Standard equipment

□ Optional equipment

¹ depending on the operating conditions

² at 25 °C and 60 % RH

³ distance 3 m

⁴ without connection hose

⁵ Equipment options to be stated at the time of order, not subsequently installable

* **What does MID compliant mean?** The European Measuring Instruments Directive (MID) has replaced the existing rules of national approval and subsequent calibration in some areas. As a result, all power meters, which are used for energy consumption billing, must be MID compliant in the future.

** Functionally, this device contains a hermetic system with fluorinated greenhouse gas as a refrigerant in the specified specifications and with a greenhouse gas potential corresponding to the indicated GWP factor.